



Gripper chuck

# GF - for cylindrical shank DIN 69880



### APPLICATION

Optimal for moving and positioning bar material and pipes in automatic production sequence.

### TYPE

2-jaw gripper chuck GF for cylinder shaft DIN69880.

### CUSTOMER BENEFITS

- ⊕ Simple, operationally safe system thanks to spring pretensioning with automatic jaw resetting
- ⊕ High efficiency thanks to direct placement on the tool turret without additional actuation device
- ⊕ Simple retrofitting
- ⊕ Clamping jaws can be adapted for special profiles

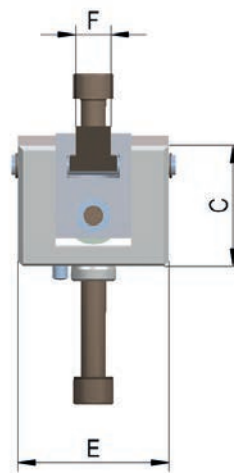
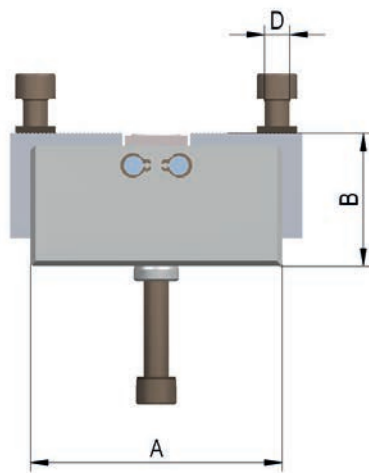
### TECHNICAL FEATURES

- Clamping force by means of disc spring package
- With exchangeable take-up shaft

### Included in the scope of delivery:

Chuck, chuck and jaw mounting screws, slot nuts (without top jaws)

GF = gripper, chuck



Gripper chuck GF

C 15  
2-jaw gripper chucks GF for cylindrical shank DIN 69880, chucks without shank, without jaws

Item No.	141077	141078 ▲	141079 ▲
Size	80	100	125
A mm	80	100	125
B mm	50,8	52,8	72,8
C mm	46	48	67
D	M8	M 10	M 10
E mm	50	60	65
F mm	12	14	14
Stroke H mm	3	4	4
U	M8	M 10	M 10
Clamping force min. kN	1,3	2	5,3
Clamping force max. kN	1,7	2,7	6



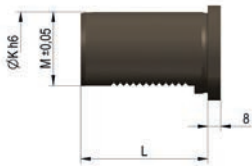
Gripper chuck

## GF - for cylindrical shank DIN 69880

C 15  
Cylindrical shank DIN 69880

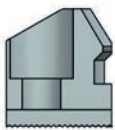


Item no.	Initial size	Kh6 mm	L mm	M±0,05 mm
156806	25	25	48	23,5
141080▲	30	30	55	27
141081	40	40	63	36
141082▲	50	50	78	45



## Jaws GF

C 21  
Clamping jaws



Item no.	Chuck Size	Jaw length mm	Jaw height mm	Jaw width mm
141084	80	28	26	28
141085	100/125	30	34	30